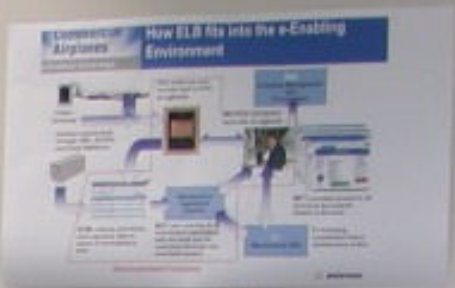


# ARM Visit to Lab and BFI





### Maintenance Controller Terminal

- Web-based access to ELB database
- Integration with Airframe Health Management
- Web-based interface for status
- Remote ability to manage fault maintenance requirements
- Provides access to decision-making system

### ELB Highlights

- Local or host operating
- Web-based interface for status
- Remote ability to manage fault maintenance requirements
- Provides access to decision-making system



# Conclusions

- Alan spent almost two hours
  - Talked to every engineer there (which was most of the folks)
- Looked at 747/737 installations
- Looked at most applications
- Asked a LOT of questions
- Was very interested in the SIA Proposal
- Toured the BFI Wireless Lab
- Bruce Pollock staged a load from DDM for him and explained the DDM infrastructure.
- Was very positive to our collective efforts
- Really enjoyed seeing real stuff

# 777-200LR Airplane

Meeting with Lars Andersen  
VP 777 Derivative Airplanes



# 777 200LR EFB Status

4/11/05

System	Statu	2005					
		M	A	M	J		
WD002 H/W enhancements FC		Start Installs ▲ 3/19	Factory Test ▲ 4/29	Roll Out ▲ 5/8	First Flight ▲ 5/24	Leave Paris ▲ 6/8	
Printer install Testing to continue thru 4/1			EVT On Dock Install ▲ 4/11	▲ 4/19			
Software Enhancements			FC Release ▲ 4/15	▲ 4/24	▲ 4/29	OD EVT ▲ 5/17	Install ▲ 5/19
AMM (TPA) Application installed with Factory load, updated DB just before fly away.			Install ▲ 4/8	4/18	Verify Maps on TouDB Update ▲ 4/22	5/9	DB Update ▲ 5/19
Video Application installed with Factory load.			Install ▲ 4/8				
Performance				Lab Checkout ▲ 4/25	▲ 5/4	Install ▲ 5/19	
EFB Document Browser (EDB) BP2 available now Waiting for BP2.1				BL BP2.1 ▲ 4/22		Install ▲ 5/19	
Fault Reporting			BP1 B/L ▲ 4/5	BP2 Lab Checkout ▲ 4/13	▲ 4/22	Install ▲ 5/19	
Terminal Charts					R/L In Lab Verify Maps ▲ 5/10	▲ 5/13	Install ▲ 5/19
Training					Lab ▲ 5/9	▲ 5/13	Alternate window ▲ 5/19
						▲ 5/27	



# Action Items from Meeting

- Get with pilots on application plan (Allen/Vanetten).
- Verify all maps prior to install (CIS).
- Verify all Charts prior to install (CIS).
- Create cheat sheets for pilots during demos (Porisch/Vanetten).
  - Includes known problems and workarounds
  - We agreed to review all open Boecomms
- Think about sending someone on the plane for the tour (Larson).
- Lars asked if Dave Allen was going to Paris, and it didn't seem like a question (Larson).